

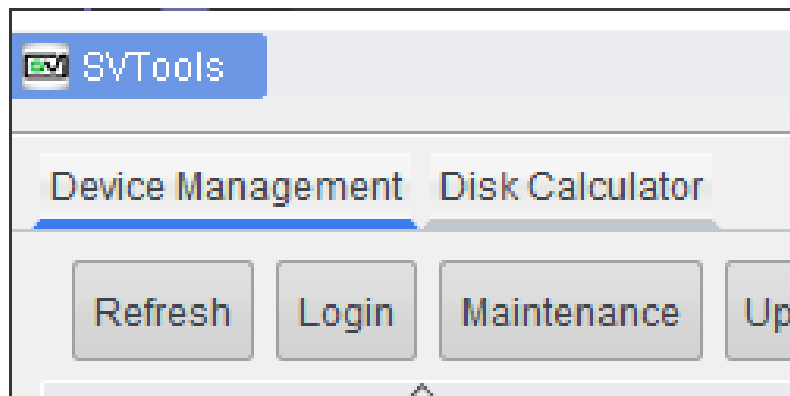
How to Find / Configure IP Camera using SVTools

Using the SVTools Program, you can find IP Cameras on your network. This may be required for cameras that are not showing up on your network or for easy setup for an individual camera. You can download the tool from our website here.

<https://www.cctvsecuritypros.com/surevision-downloads>

To utilize the tool, you first must plug your cameras into a POE Switch that is on the Network or if the cameras on the NVR plug your computer into a POE port on the NVR with the cameras.

Once installed you can find cameras by hitting the Refresh button next to the Search Settings button at the top of the application.



In the camera list you should be able to identify the camera via the MAC Address if the camera has not been mounted. The Mac Address can be found on the sticker of the camera. A mac Address is identified by its 6 segmented Letters and Numbers. It will usually look something like this “a1:b2:c3:d4:e5:f6”.

Please note that the IP Address of the camera may be different than the one in the IPC Manual depending on if it is connected to a network with DHCP.

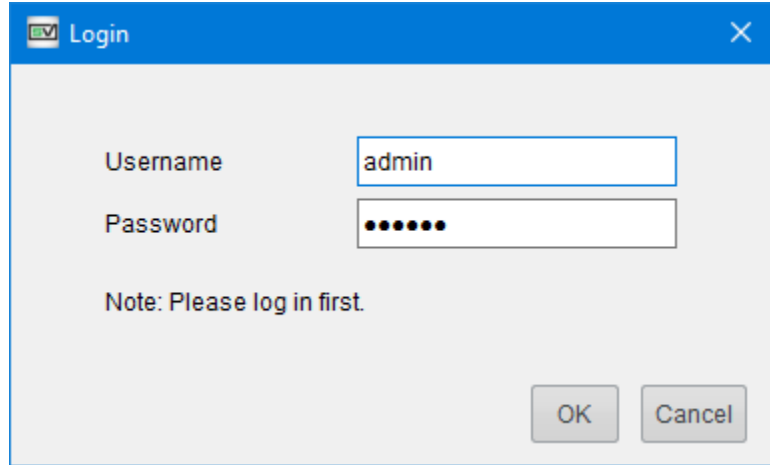
If you cannot connect to the camera you may need to set your adapter settings on your computer to match the IP of the camera. i.e. if the camera is 192.168.1.15 set the IP of the computer to 192.168.1.2 with a subnet of 255.255.255.0

For more information on how to change your adapter settings on your computer refer to the Microsoft Support page linked below.

https://support.microsoft.com/en-us/windows/change-tcp-ip-settings-bd0a07af-15f5-cd6a-363f-ca2b6f391ace#WindowsVersion=Windows_11

MAC
e4:f1:4c:56:d2:9b
e4:f1:4c:4c:66:eb
e4:f1:4c:55:1a:86
e4:f1:4c:56:d2:f9
e4:f1:4c:50:19:3c

Once the camera shows up on the list you can select the camera and click Login, the default password for a camera is 123456. Alternatively, you can select the **e** icon under Configuration to log into the IP address of the camera via the web.



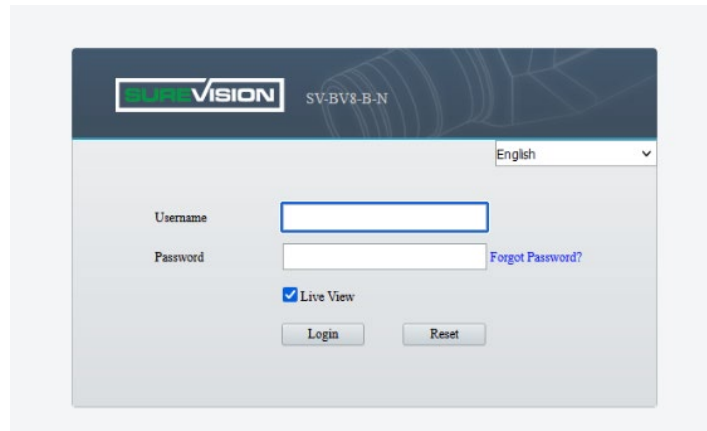
Username: admin

Password: ●●●●●●●

Note: Please log in first.

OK Cancel

If you want to make advanced configurations to the camera such as Auto Tracking or IVS, you will need to login over the web interface and download the plugins if prompted.



VISION SV-BV8-B-N

English

Username: []

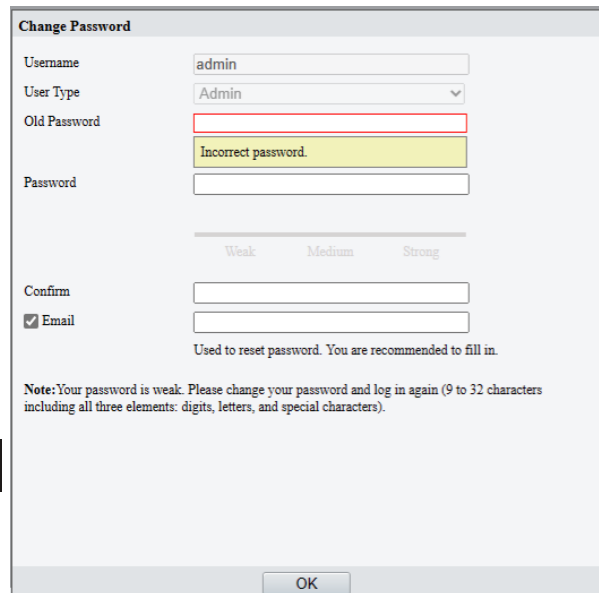
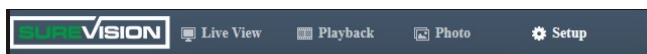
Password: [] [Forgot Password?](#)

Live View

Login Reset

Once you log in with the default information on the Web it will prompt you to change the password. If you have a system we recommend using the same password as the NVR. You will also be prompted to put in your email. Please put in an email that will always be accessible to you.

Once done you can setup your cameras by navigating to the Setup page located at the top of the page and you can adjust any settings internally for the camera.



Change Password

Username: admin

User Type: Admin

Old Password: []

Password: []

Confirm: []

Email

Used to reset password. You are recommended to fill in.

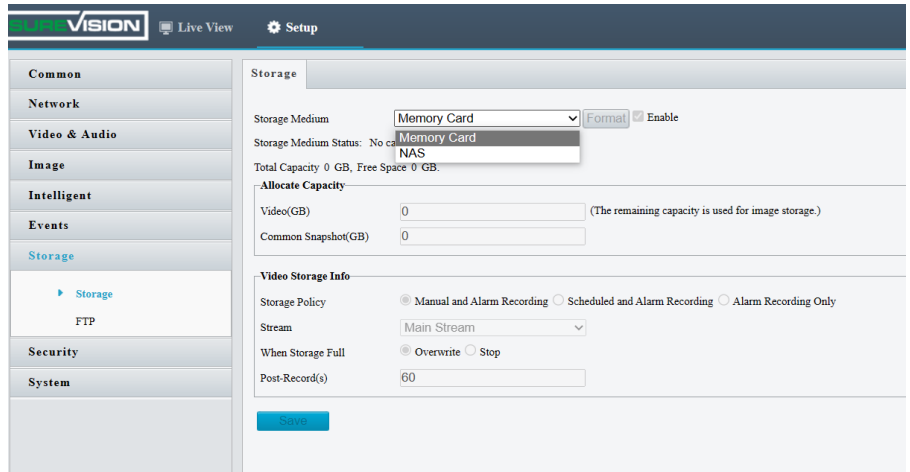
Note: Your password is weak. Please change your password and log in again (9 to 32 characters including all three elements: digits, letters, and special characters).

Weak Medium Strong

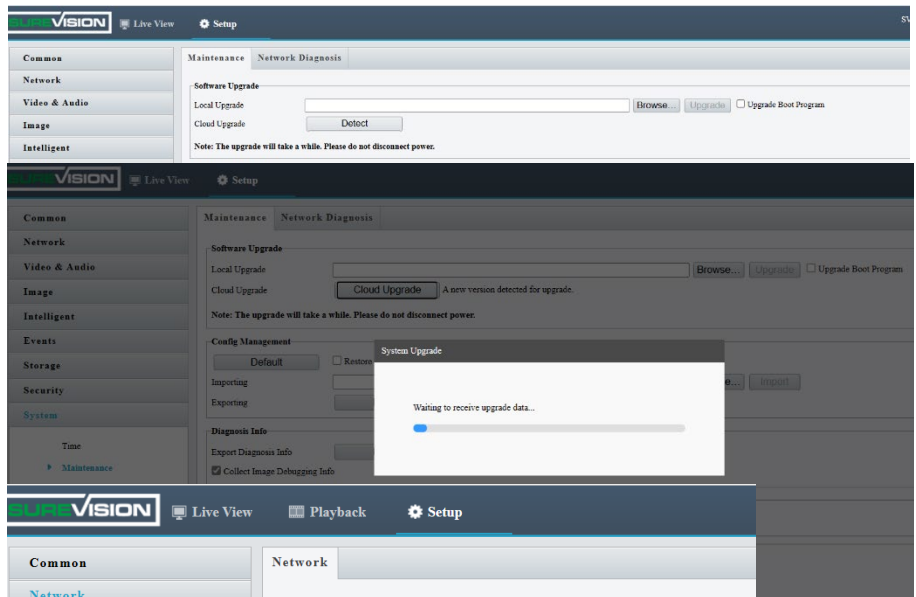
OK

Recommended Settings to Check

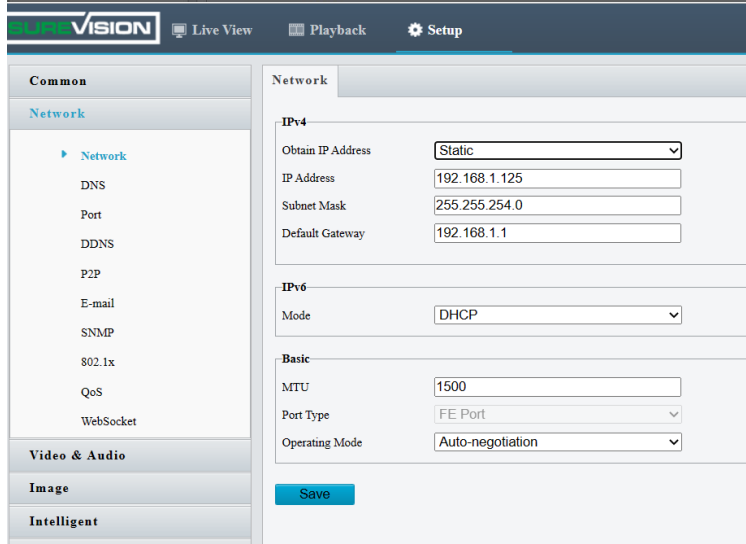
If using the camera independently check your Setup > Storage Page and make sure you have your Memory Card is detected and enabled.



Check your camera for Updates under System > Maintenance > Cloud Upgrade. Click on Detect, then Cloud Upgrade. This will ensure that the most recent features are available for your camera. The camera will need to be on a network with internet access for this function to work.



You can make changes to your Network Settings on the Setup > Network > Network page. DHCP is the default setting. If set to Static, you can customize the camera IP address, subnet, and Gateway.



If not using an NVR, Under System > Time > Time set your camera to Sync with NTP server and select your Time Zone. This will allow you to enter a time server to automatically sync to the camera. We usually recommend using one of the following servers.

time.windows.com

or

time.google.com

VISION Live View Playback Setup

Common Network Video & Audio Image Intelligent Events Storage Security System

Time DST

Sync Mode: Sync with NTP Server

Time Zone: (UTC-05:00) Eastern Standard Time(New York, Toronto, Bogota)

System Time: 2011-12-01 00:02:03

Set Time: 2011-12-01 00:01:48 Sync with Computer Time

NTP Server

NTP Server Address: 0.0.0.0 Test

Port: 123

Update Interval(s): 600

Save

Under System > Time > DST Make sure you set DST to enabled if using NTP and set the Start time to Monday Second Sunday 02 and Nov First Sunday 02. This will enable Daylight Savings Time.

VISION Live View Playback Setup

Common Network Video & Audio Image Intelligent Events Storage Security System

Time DST

DST: On Off

Start Time: Mar Second Sun 02 h

End Time: Nov First Sun 02 h

DST Bias: 60mins

Save