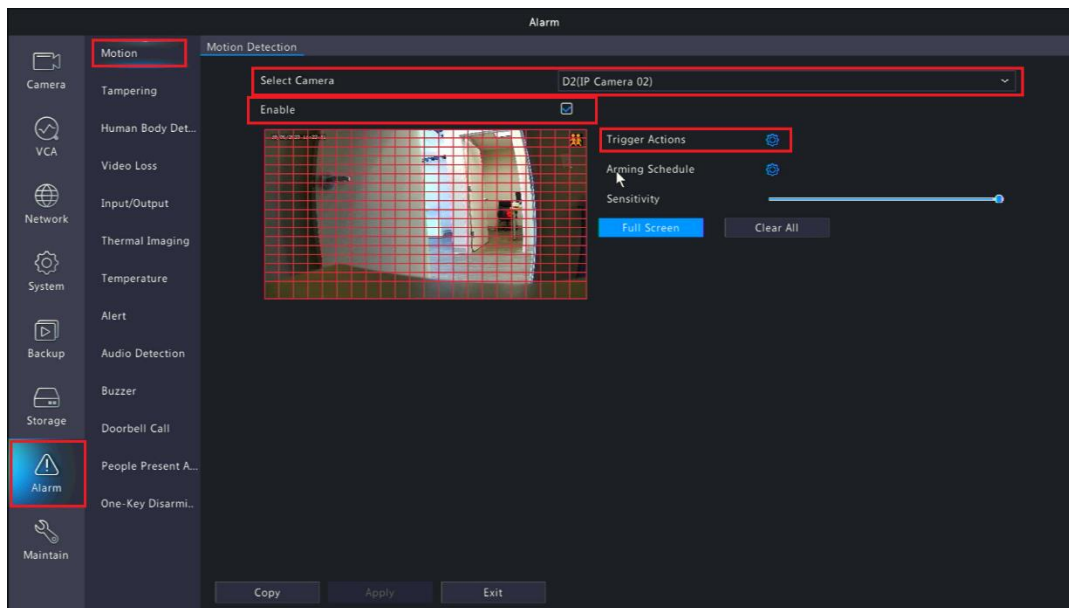


Setting Motion Detection Regions

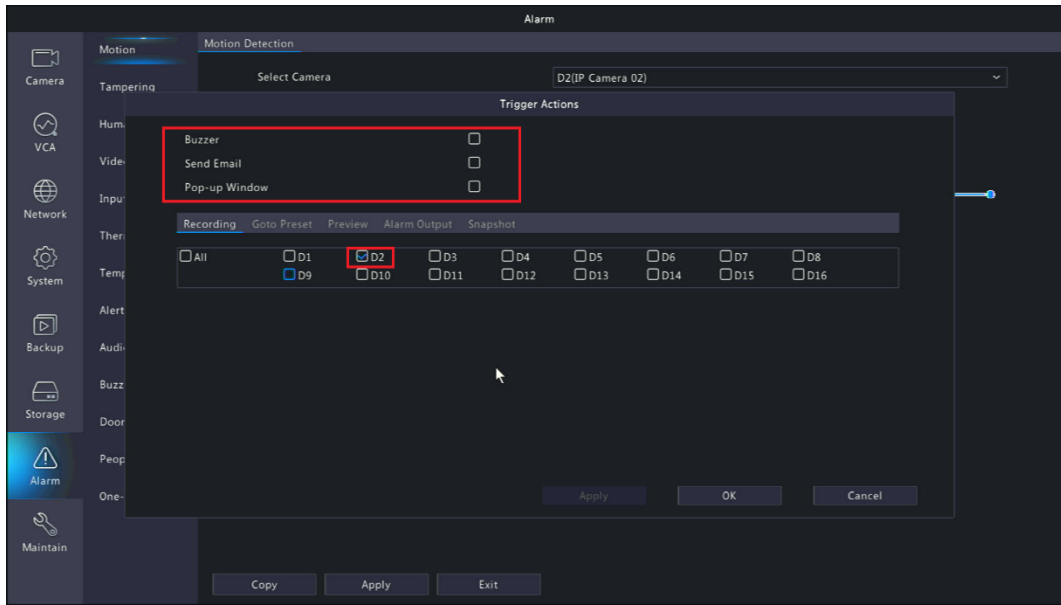
In this guide we will go over how to change the **Motion Detection Region** for your system.

IMPORTANT: If you haven't set up your system to record Motion Detection you should do so before working on the regions, as the system will not record Motion otherwise. The PDF guide you'll want can be found here [Configuring Motion Detection](#).

First, you'll want to **Right Click** on your **Live View**, next click **Menu**, then click **Alarm**. This will bring you to the **Motion** tab. As shown in the image below.



First, head to the top of the **Motion** menu. Here you will have to select whichever **Camera** you'd like to change the **Motion Detection Region** on. After selecting the **Camera** always ensure the **Enable Check Box** is **Checked**. Otherwise, your **System WILL NOT Record Motion for that Camera**. The **Trigger Actions** button will let you decide what happens when motion the motion detect region is tripped as shown in the Image preview.



If you decide to **Enable** any of the **Trigger Actions** simply **Check** the **Check Box** for whatever **Trigger Action**, you choose.

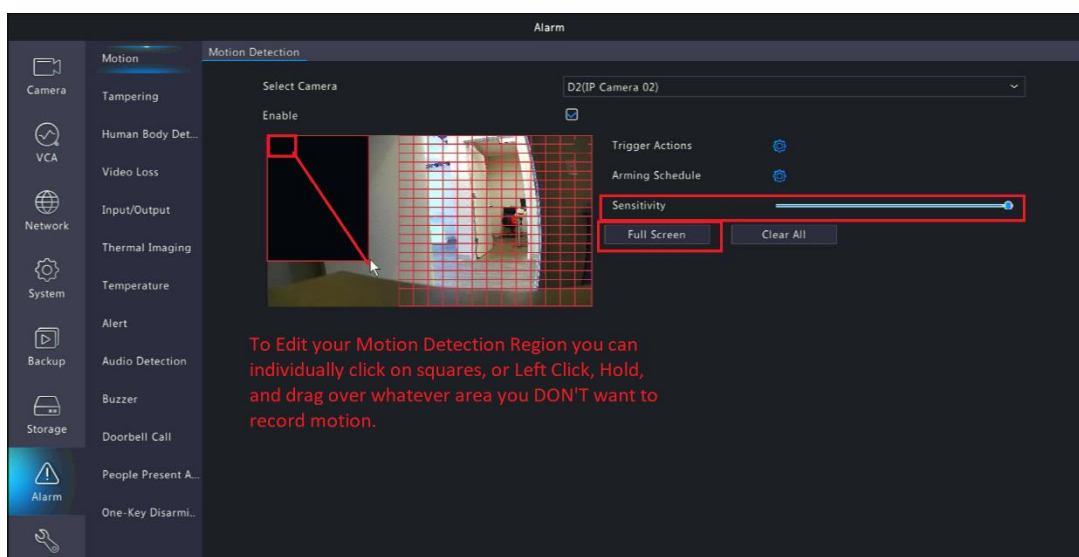
Buzzer: Emanates a **Buzzer** alarm from the **System** itself.

Send Email: Sends an **Email** to the **Reserved Email** you chose during **System Setup**.

Pop Up Window: Will show a **PopUp** on the **System**.

IMPORTANT: We recommend leaving the Settings under the Trigger Actions -> Recording as Default as these Settings can alter how the system records. As mentioned, you can see that under **Recording**, **Channel D2** is currently selected as the **Recording Channel** by **Default**. Since we're changing the **Region** for **Camera D2** this is exactly what we want. So, if you were to choose **Email** as your **Trigger Action** simply **Check the Check Box** for **Email**. Then hit **OK** or **Apply**. As a result, you will receive an email whenever the motion detect region is tripped.

From here we can finally edit the Motion Detection Region as shown in the image below.



In the Image above, you will see that there are parts of the **Camera Image** that are not currently covered with the **Red Grid**. This means that no **Motion** will be recorded for this area. **Only areas covered by the Red Grid will Trigger Motion**. To remove the **Red Grid** you can **Click on individual squares, or you can Click and Drag to remove boxes**. To make this easier there is a **Full Screen** button. This will help you see better if the grid is hard to see. After you have the **Image** set for how you'd like it to **Record Motion** you can hit **OK** and **Apply** at the bottom of the screen. Make sure to always hit **Apply** when changing **Settings** before switching to a different camera or click out of the menu. Follow the same steps for every **Camera** you wish to alter. Once completed you will have successfully setup the **Regions** for **Recording** on those **Channels**.

If you notice that the **Cameras pick up too much Motion**, you'll want to alter the **Sensitivity** bar above the **Full Screen** button as shown in the image above. Sensitivity when set to the left is at its lowest setting and when set to the right it at max sensitivity. These settings may require some trail and error to get correct for your application.

