

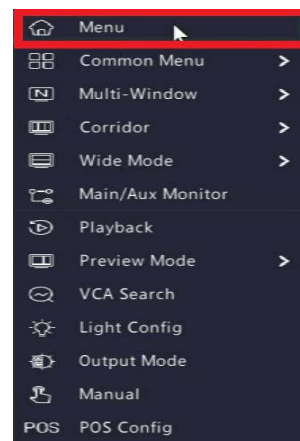
SV-NVR432-N / SV-NVR864-N / SV-NVR128-N Configuration

This guide will assist you in configuring your 32 channel NVR system using an external POE switch. Before following this guide you will want to make sure the following steps have been taken:

- Make sure the NVR is connected to a power outlet
- Attach the NVR to a TV or Monitor using HDMI 1 or VGA
- Connect NVR to Router/Switch using Ethernet Port 1 on rear of NVR
- Connect Cameras to POE Switch Ports 1-16
- Connect POE Switch Port 17 to Ethernet Port 2 on rear of NVR
- If using 2 POE Switches link them together using ports 17 and 18 only
- Power on NVR using the rear rocker switch

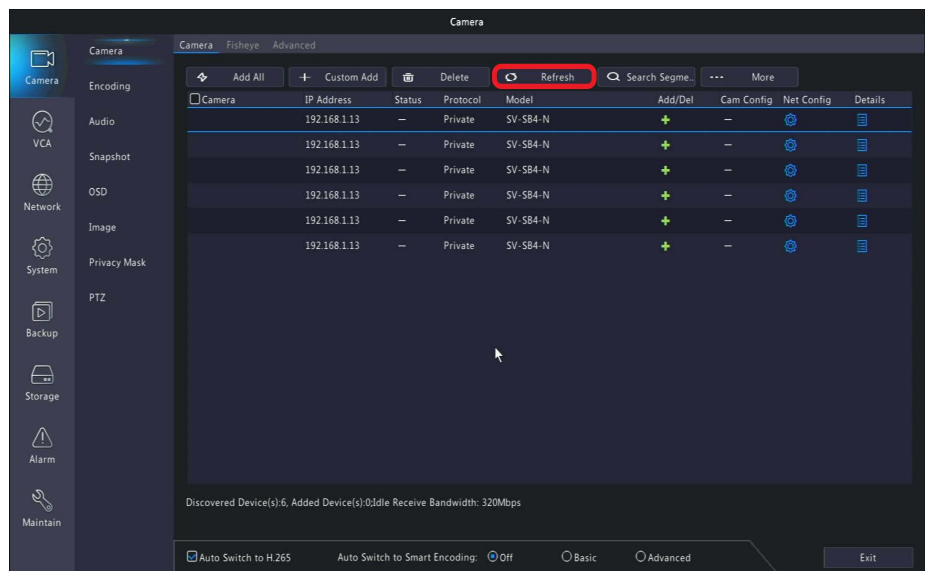
Once NVR is powered on. You will need to complete the startup wizard to configure your NVR for the first time. Please refer to the Owners Manual for help completing the Startup Wizard.

After the Startup Wizard is complete we need to Login to the NVR and Navigate to the Menu.



From the Menu, navigate to the Camera tab on the left column. Any cameras you have connected to your POE switch will show up in this menu. You may need to click the Refresh button after connecting cameras.

*Note - Cameras may take up to 2 minutes to appear in this menu after they have been connected to the POE switch.




*Optional Steps -

If you would like to take advantage of H.265 Compression you may highlight the checkbox at the top next to **Auto Switch to H.265**. H.265 compression uses less bandwidth and will increase your recording times without sacrificing image quality.

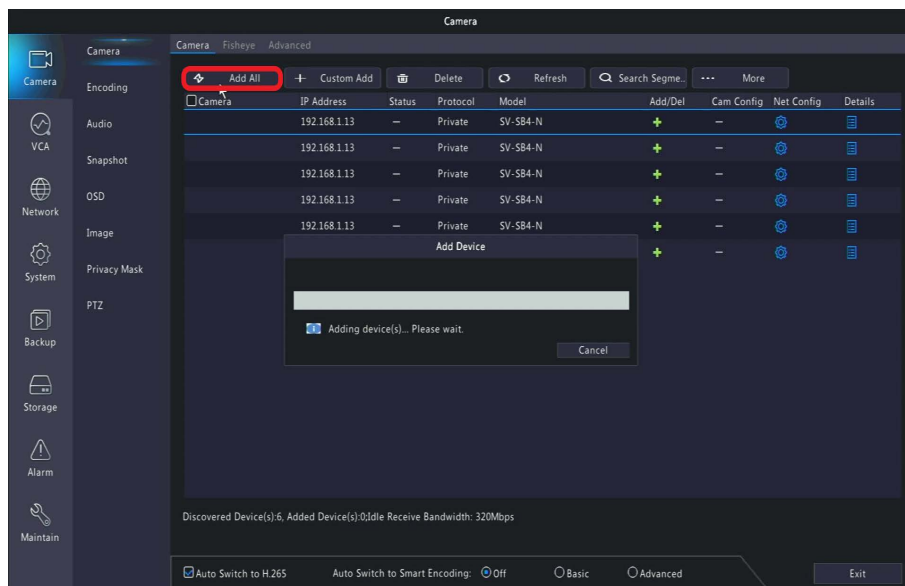
You may also select **Advanced** next to **Auto Switch to Smart Encoding** to save even more bandwidth, however this setting may degrade the video quality depending on its location.

Please note that both of these settings can be altered after the camera has been added!

There are two ways to Add IP cameras to the NVR. First is to click the **Plus Sign**  next to each camera one at a time.

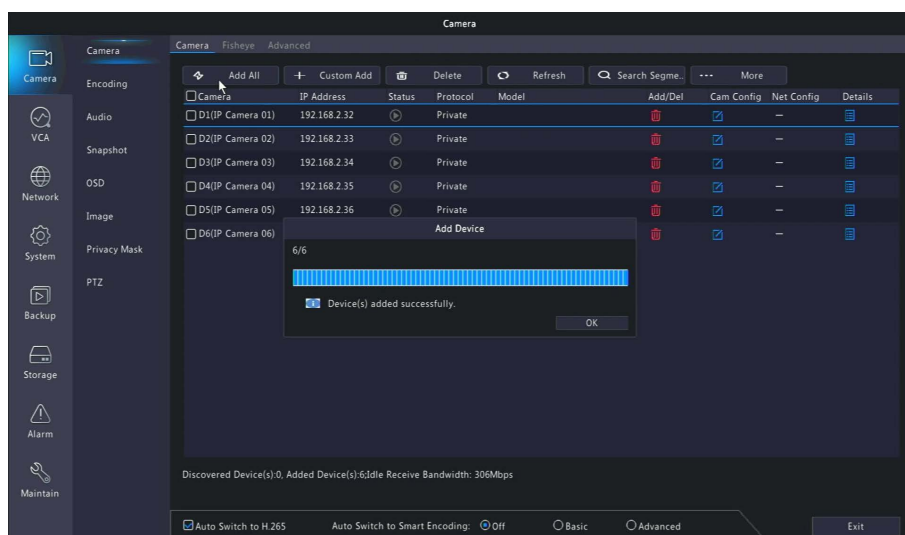
Or you may click the **Add All** button at the bottom. In this example we will be clicking the **Add All** button.

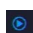
After clicking Add All, the NVR will begin to assign each IP camera with its own IP address.



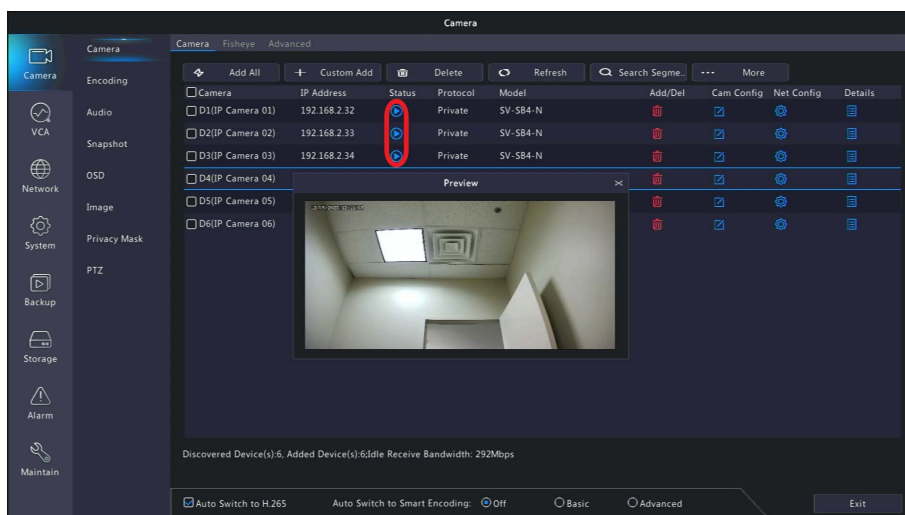
After each camera has been assigned its own IP address the process is complete. The NVR will let you know the devices have been added successfully. Click **OK** when you see the prompt.

*Note - The more cameras you are adding the longer this process will take. Each camera may take a few seconds to complete.



Once the cameras have been added you can quickly view the camera feed to make sure the video is working by click the Play button  next to the cameras IP address.

This will display a small preview screen with the video feed.



Troubleshooting

If you are unable to find an IP camera when searching check the following:

- IP cameras can take up to 2 minutes to fully boot up.
- Be sure your POE Switch is powered on and connected to Port 2 on your NVR.
- Ensure that both ends of the Ethernet cable are connected tight!
- Check for Status Lights on POE switch if you do not see any status indicator lights on the port your camera is connected to try an alternate cable or redo your cable ends.
- When making custom cables ensure that you are using T568B standard. This is very important!
- You can cover your hands over the cameras lens and IR LEDs. After a few seconds you should see the IR light turn on. This lets us know the camera is getting power!
- Not all Cat5e and Cat6 are created equal. Make sure you are using solid copper cable on long distance runs over 300FT. Be sure these long distance runs do not exceed 800FT.
- Swap cameras on cable with known good cameras to rule out issue with cable

Any other questions or concerns please feel free to contact us at **support@cctvsecuritypros.com**

Our technicians may ask to connect into a nearby computer to better assist you. To expedite this process please follow this link and download TeamViewer!

<https://download.teamviewer.com/qs>

