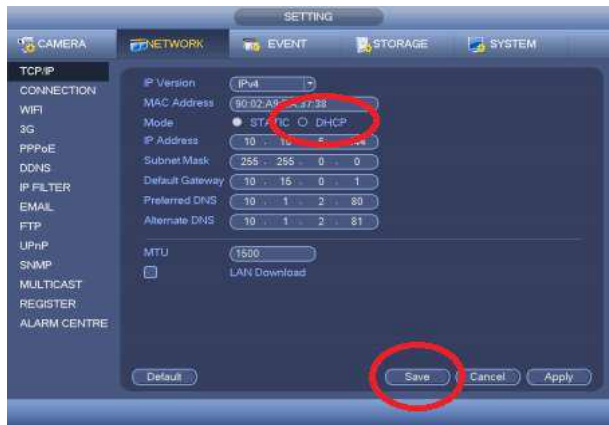


Remote Viewing as Easy as 1,2,3

P2P/QR Code Scanning Instructions

To access your recorder remotely you must first connect it to your modem or router using an Ethernet cable and power on the recorder. Go to Main Menu->Setting->Network-TCP/IP and Enable "DHCP" inside of the Network settings and Save. Once DHCP has been enabled you will need to reboot the system. *Some models require you to click "edit" to find DHCP

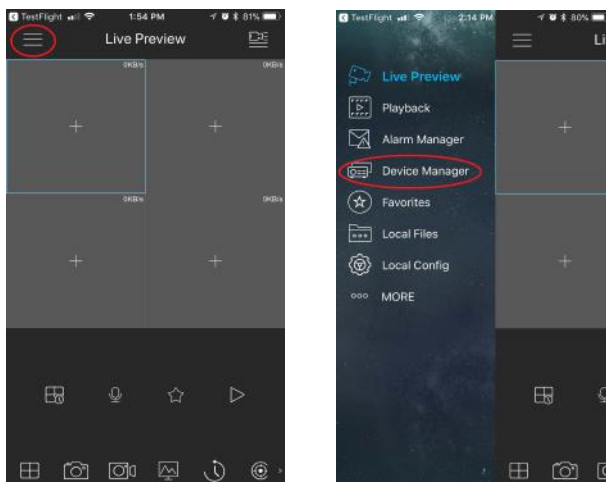


Viewing Cameras on Smartphone or Tablet:

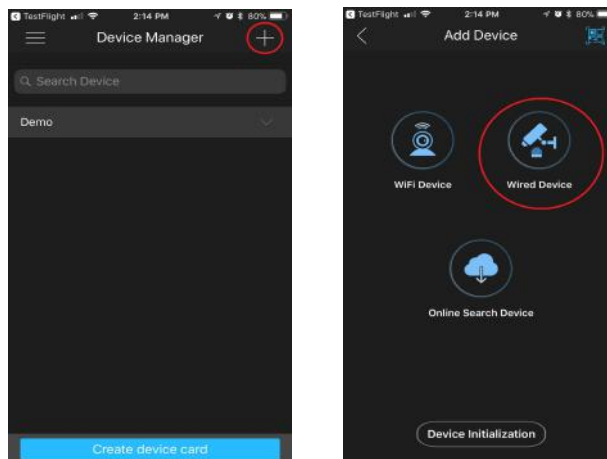


Download SCS Lite or SCS Pro (Tablet Apps: SCS HD Lite or SCS HD Pro)

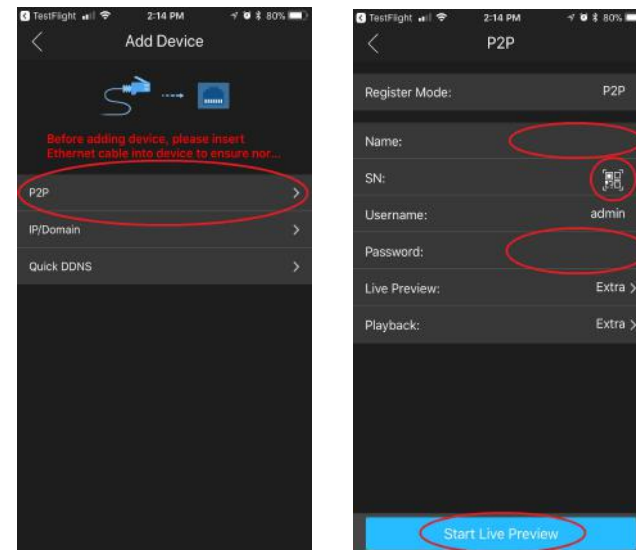
Go to the Main Menu and then Device Manager



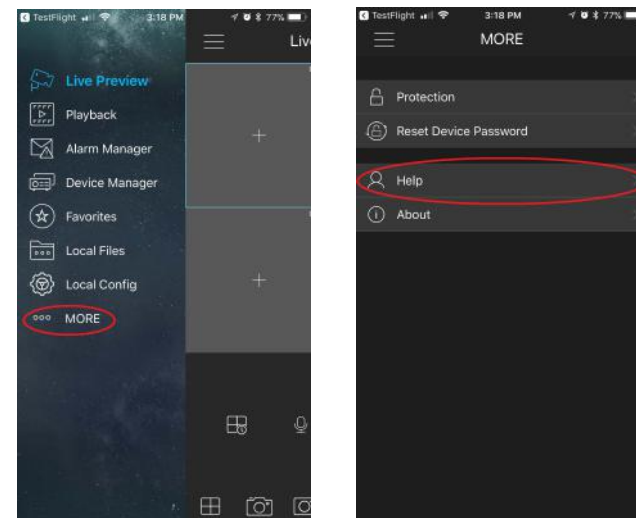
Add a Device by Clicking the (+) at the top right corner. Select Wired Device.



Select P2P. Name the Device and Click the QR Code button to begin scanning the code until the serial number populates. Enter the default user name (admin) and your custom password for the DVR/NVR. Select Start Live Preview on the bottom to view your cameras.



Please refer to the Help Menu inside of the SCS App to take full advantage of your SCS experience



Once the system has rebooted navigate to the Main Menu -> Setting -> Network -> P2P (sometimes called Easy4IP) Enable the check box at the top and Save. Enter this menu one more time and take note of the QR Code on the right side labeled SN. You will need this QR code for the next few steps.

