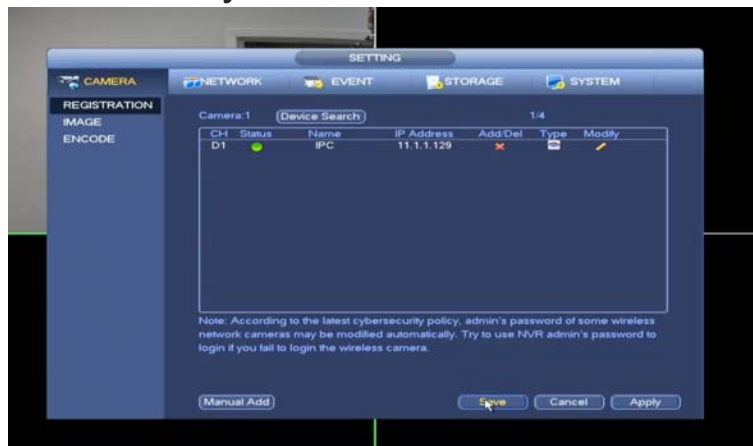


(CSP-NVRWIFI)

SETUP INSTRUCTIONS

- 1) Power the NVR using the power adapter provided.
- 2) Connect a monitor to the NVR to view the camera display interface.
- 3) Plug in each camera separately using the 12V DC power adapters provided. Try and limit one camera at a time for first time setup.
- 4) Navigate to the Main Menu → Settings → Camera → Registration Menu
- 5) Once camera is connected to power source, it will take up to 2 minutes for camera to appear on display monitor.
- 6) The camera will add itself to the NVR. You will see the cameras Status change to a Green color after it has been successfully added.



- 7) Repeat above steps for next camera

***IMPORTANT!!! ALWAYS TEST CAMERAS FOR CONNECTIVITY PRIOR TO MOUNTING**