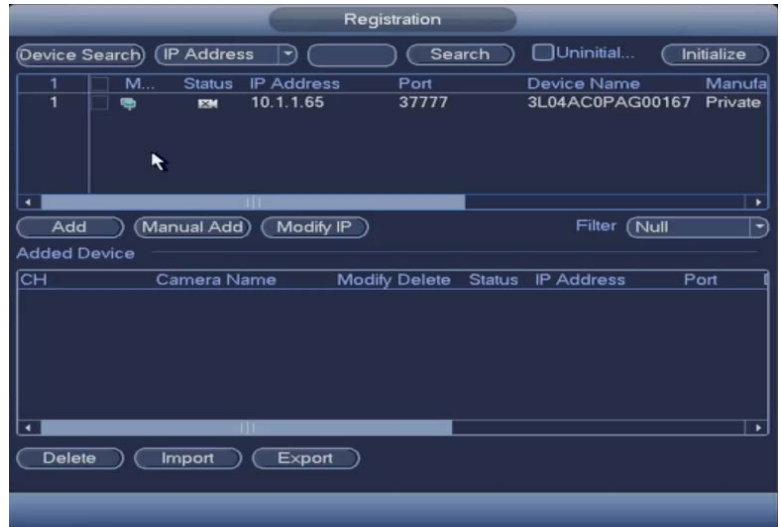


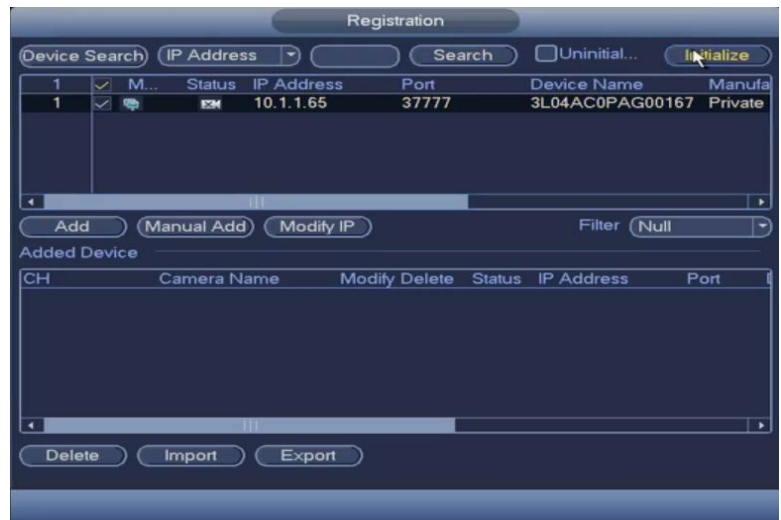
## Initializing IP Cameras

IP Cameras need to be Initialized before use on select NVR units. This essentially alters the IP camera password to match your custom admin password of your NVR unit. This feature ensures the safety and security of your new camera.

Be sure your IP camera is connected to the NVR using an Ethernet cable. You should see the IP camera appear inside of the following menu. **Main Menu -> Setting -> Camera -> Registration.**



Highlight and select the check box to the left of the IP Camera. After the camera has been selected, click on **Initialize** at the top right of the menu.



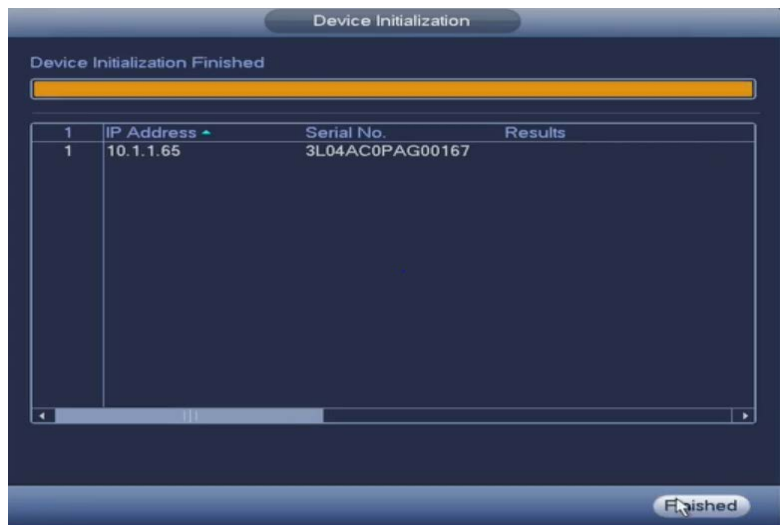
Be sure "Using current device password and email info." is selected and click **Next**



Click **Next** to begin the Device Initialize



The IP Camera will take a few seconds to Initialize. Once this is complete you will be able to click Finished at the bottom right of the page.



After the IP Camera has been Initialized you will see a Green Status Icon next to the camera. This means it is ready for use! Most systems will auto add the camera so you may not have to click the Add button. If the /NVR does not Auto Add the camera you may select and Add the camera.

