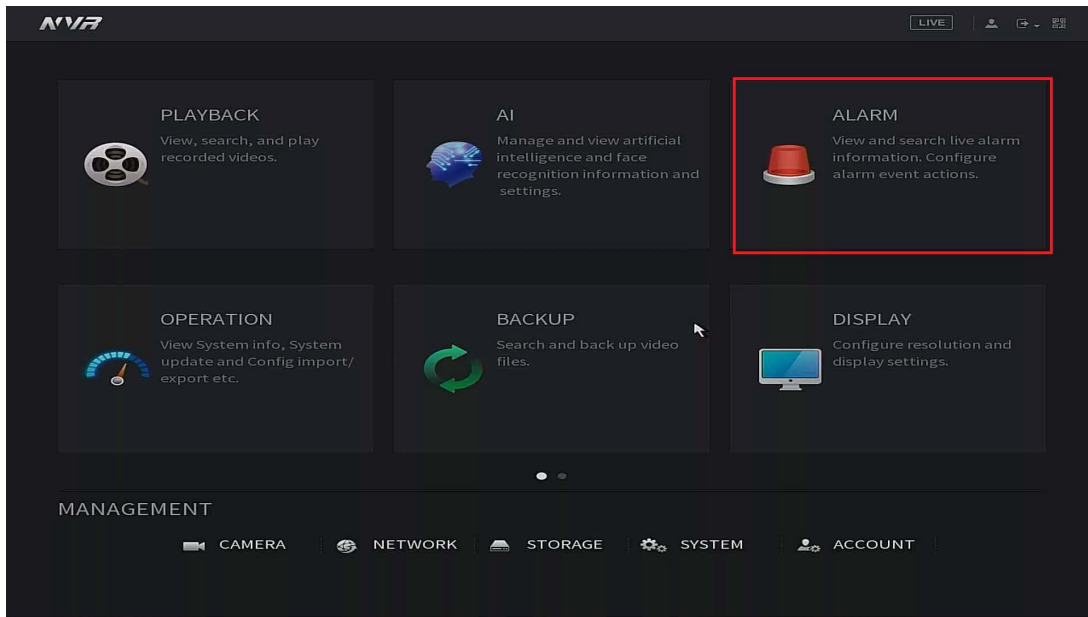


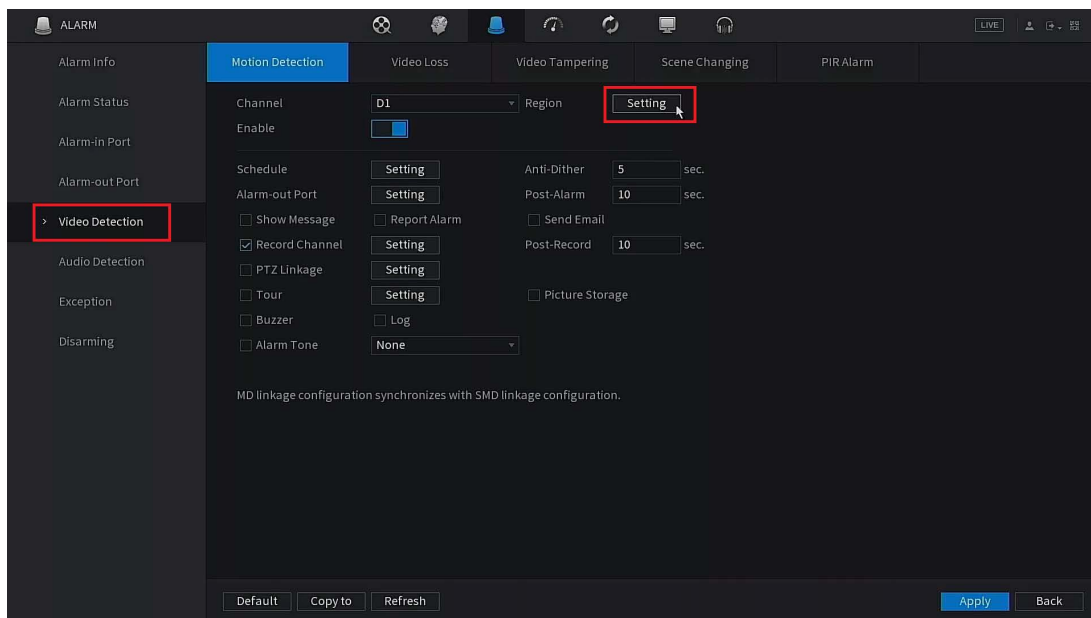
How to Setup Motion Detection Regions

The following guide will show you how to adjust the **Motion Detection Region** settings on your system

Navigate to **Main Menu->Alarm**



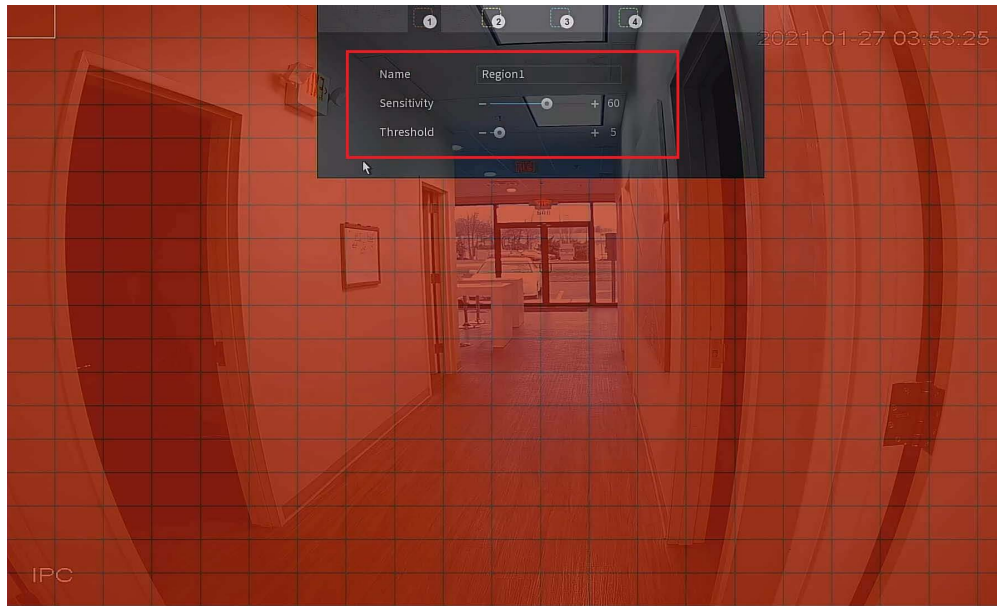
Select **Video Detection** on the left Column. Then you will select **Setting** next to **Region** on the right hand side



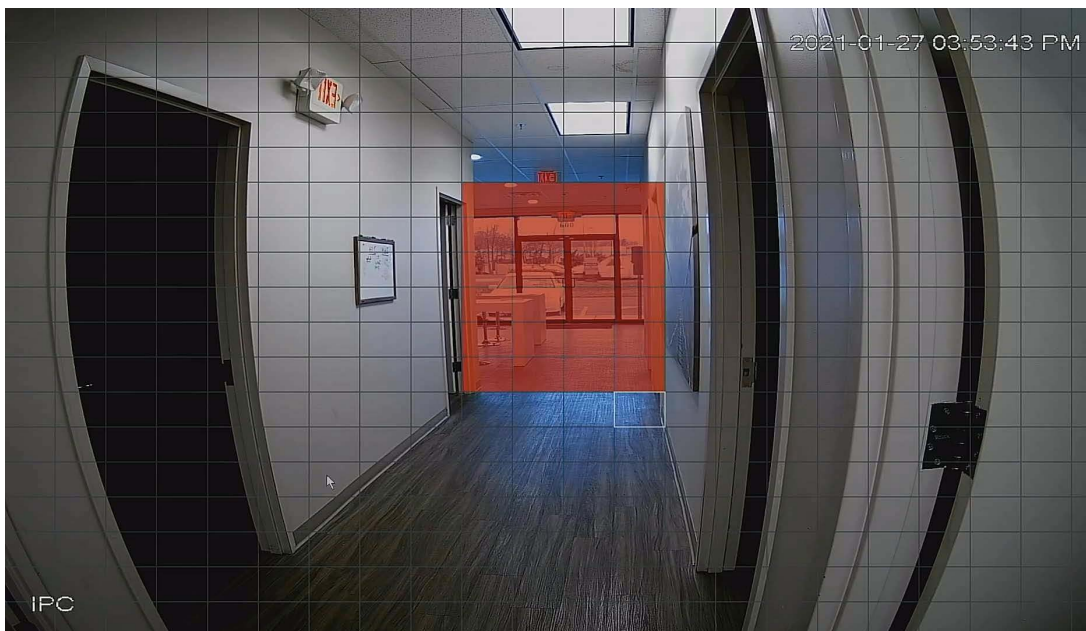
Once you select **Setting** you will see the camera come up in full screen with **Red blocks**. At the top of the screen you can adjust the **Sensitivity** and **Threshold** of the Motion Detection. This should be adjusted if you feel the Motion is not recording accurately.

Sensitivity is how sensitive the motion detection will be. The lower the number the less recording you will get. Recommended range is 40-80

Threshold is how much motion needs to occur in order to trigger the recording. Adjust this only if you plan on recording larger objects (Cars/trucks) only and would like to filter out smaller objects (People/Animals)



The areas in **Red** is where the camera will detect motion. This means the recording will only start when motion occurs in the **Red** areas. If motion occurs in an area that is not **Red**, the system will not record that event. You can click and drag with your mouse to make the adjustments.



Once you have created the areas that you would like recorded when motion occurs, **Right Click** with your mouse and then select **Apply** to save the settings.

