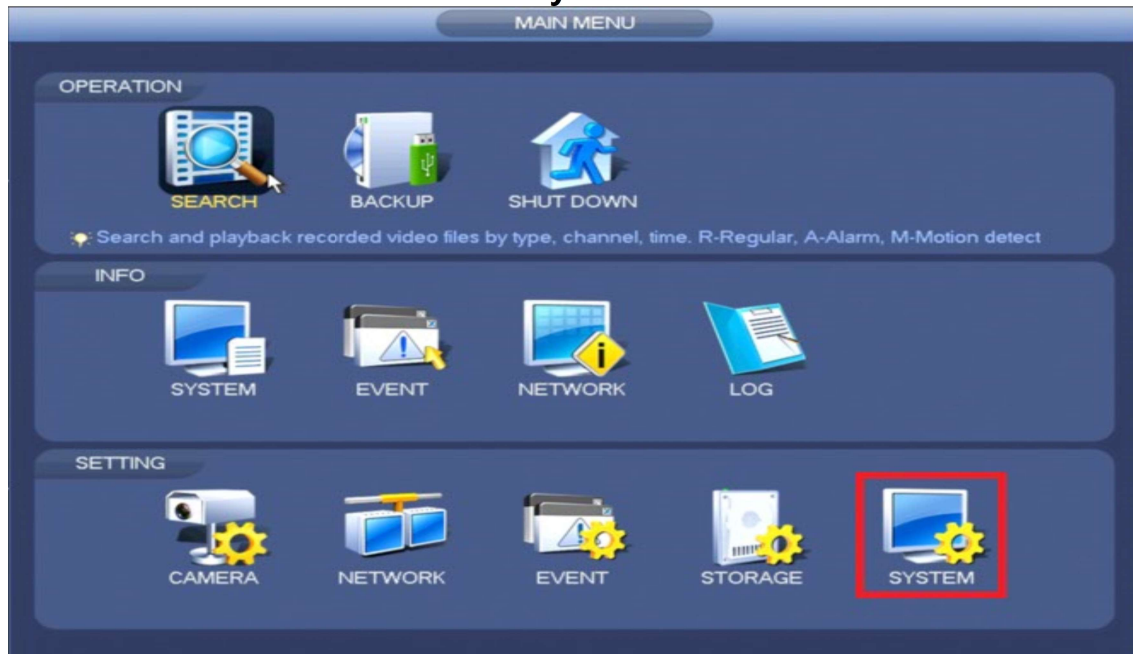


Date & Time Setup

In order to change the **Date and Time** you will need to go to **Main Menu->Setting->System**



Inside of System **Settings** navigate to the **General** Tab on the Left and **Date & Time**. Enter in your **System Time**. You may change the **Format** of the system time from a **24 Hour** clock to a **12 Hour** clock if you prefer. You may enter the **Daylight Saving Time** settings under "**DST**".

