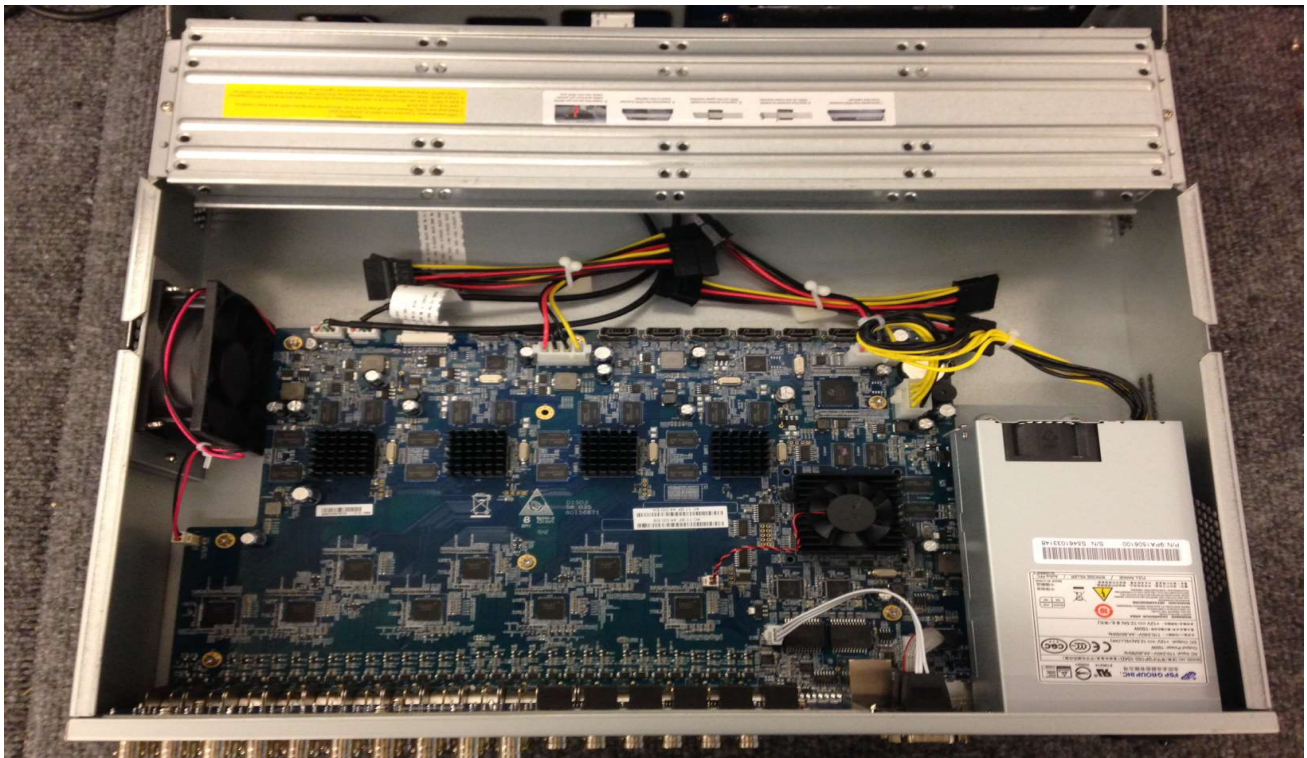


Replacing or installing a Hard Drive in your CCTV Extreme Series DVR

First you will need to unplug the system from its power source. *Note: Make sure the DVR is powered off before opening the DVR. Next you will need to remove 2 screws holding the top cover in place. There will be two Phillips Head screws on the rear of the unit.



Once these screws have been removed the top cover will slide towards the rear and lift off.



Installing or Removing Hard Drive

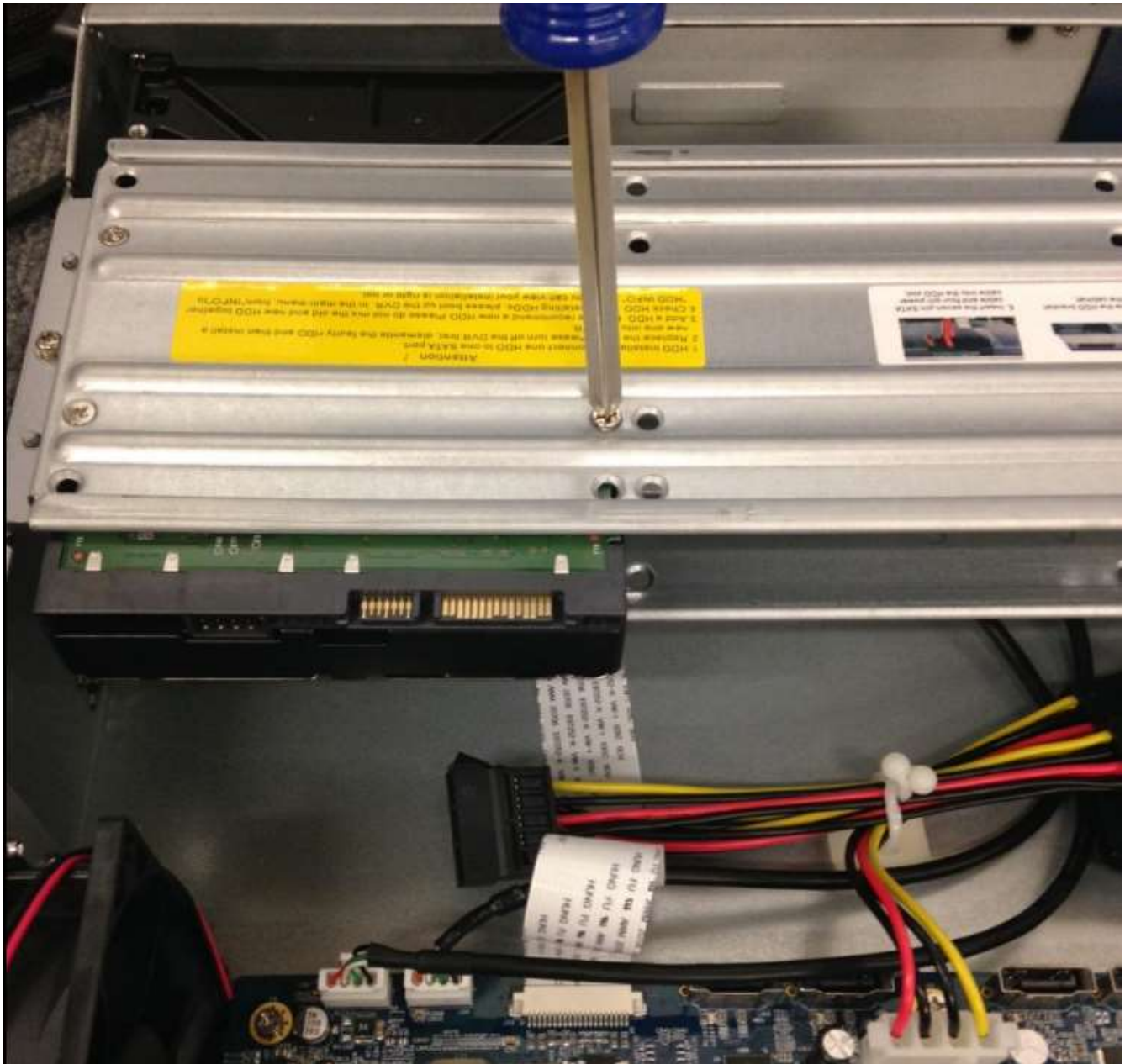
With the top cover removed you will be able to install or remove your Hard Drive. You will need a SATA cable and 4 HDD screws provided in the accessory kit of your system.



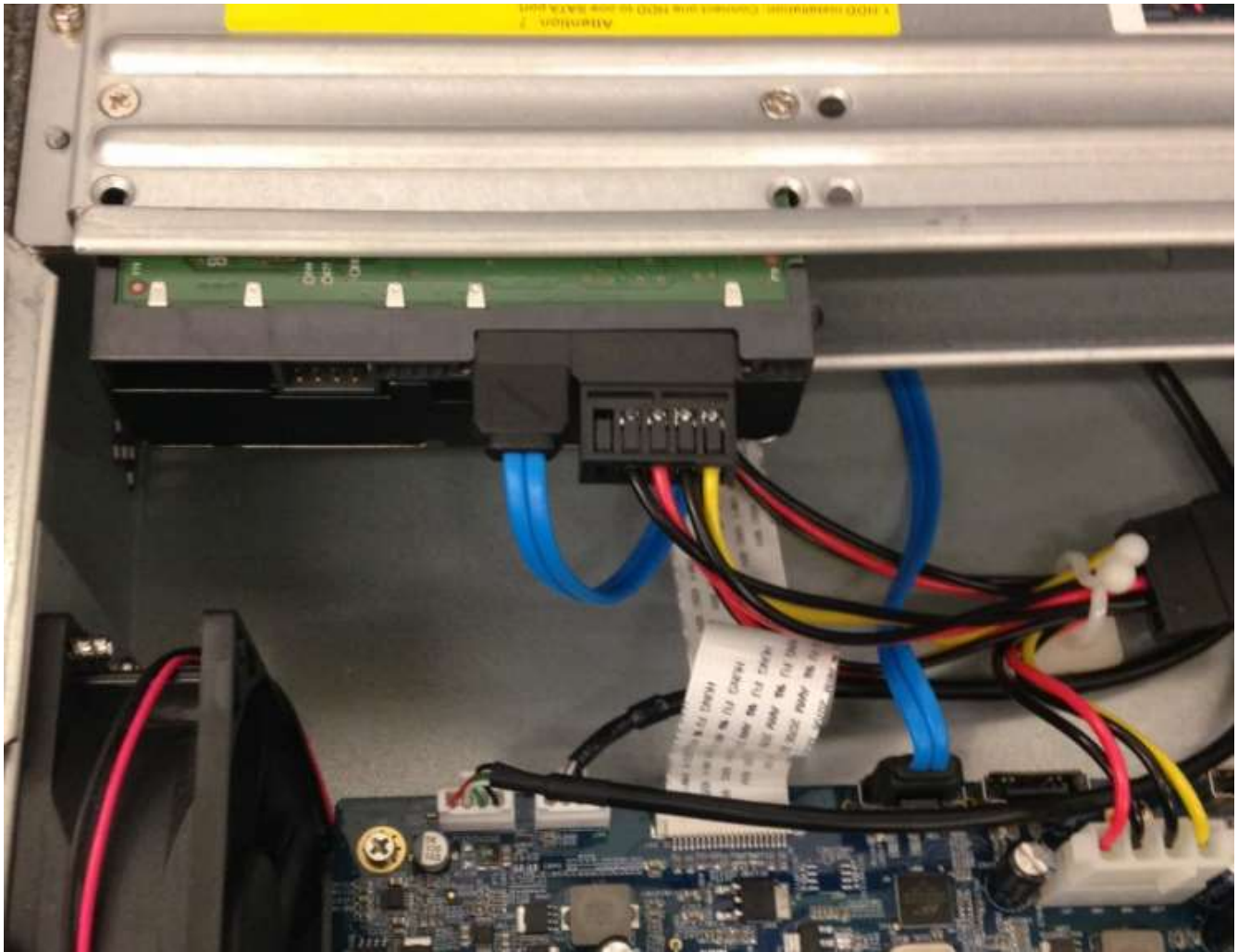
Slide the Hard Drive into the rack assembly.



You can now mount the Hard Drive to the Chassis using the supplied screws.



Connect both the Blue SATA cable as well as the SATA Power cable. This cable will be found installed already in your DVR.



Once the hard drive is mounted and connected you may assemble the top cover and fasten the four case screws removed previously in the guide.