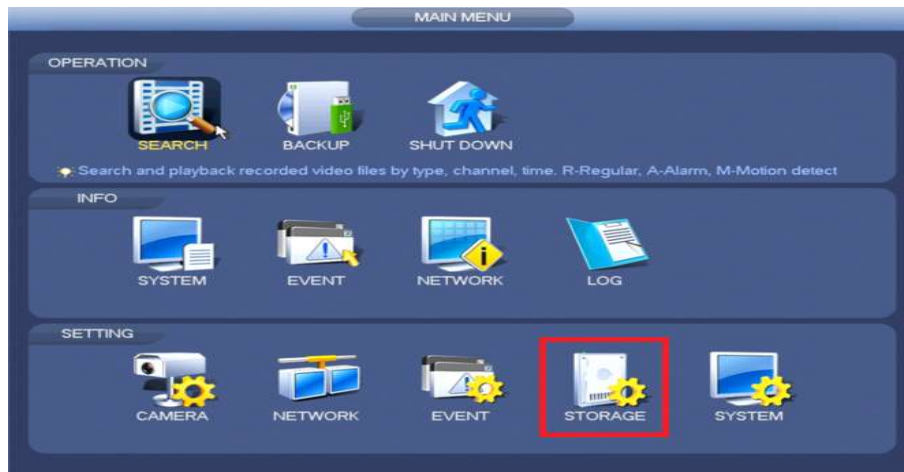


## Motion Detection Setup

Your DVR/NVR is setup to record 24/7 right out of the box. There is no need to follow this guide if you would like to continue recording 24/7. If you would like to conserve some of your Hard Drive space please follow the guide below.

This guide will show you how to set up Motion Detect.

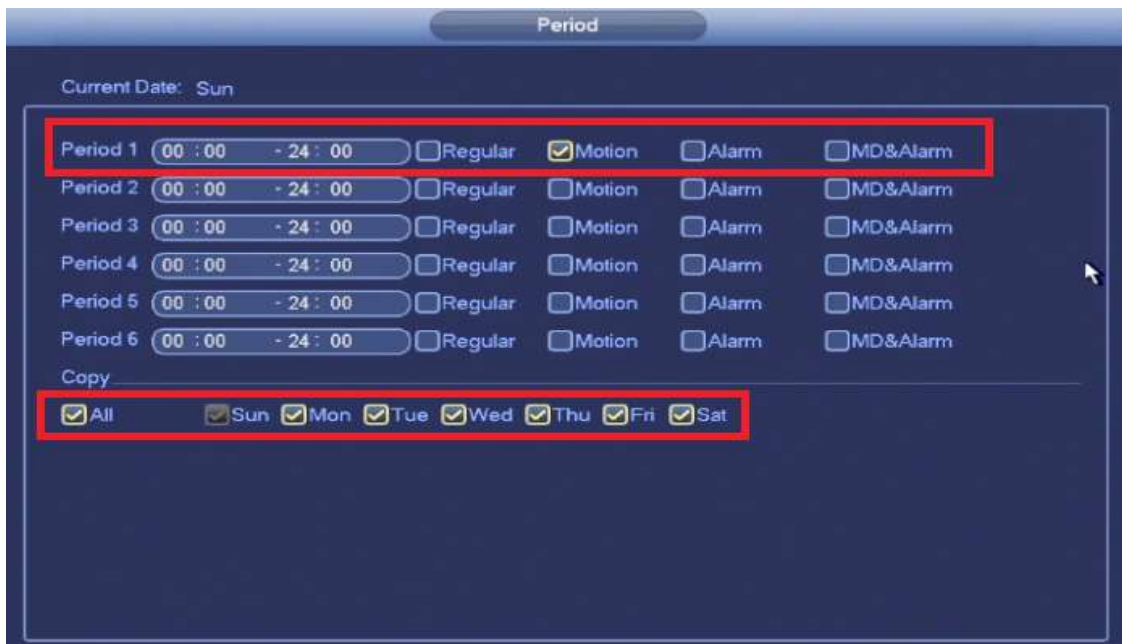
Navigate to the following menus, **Main Menu → Storage**



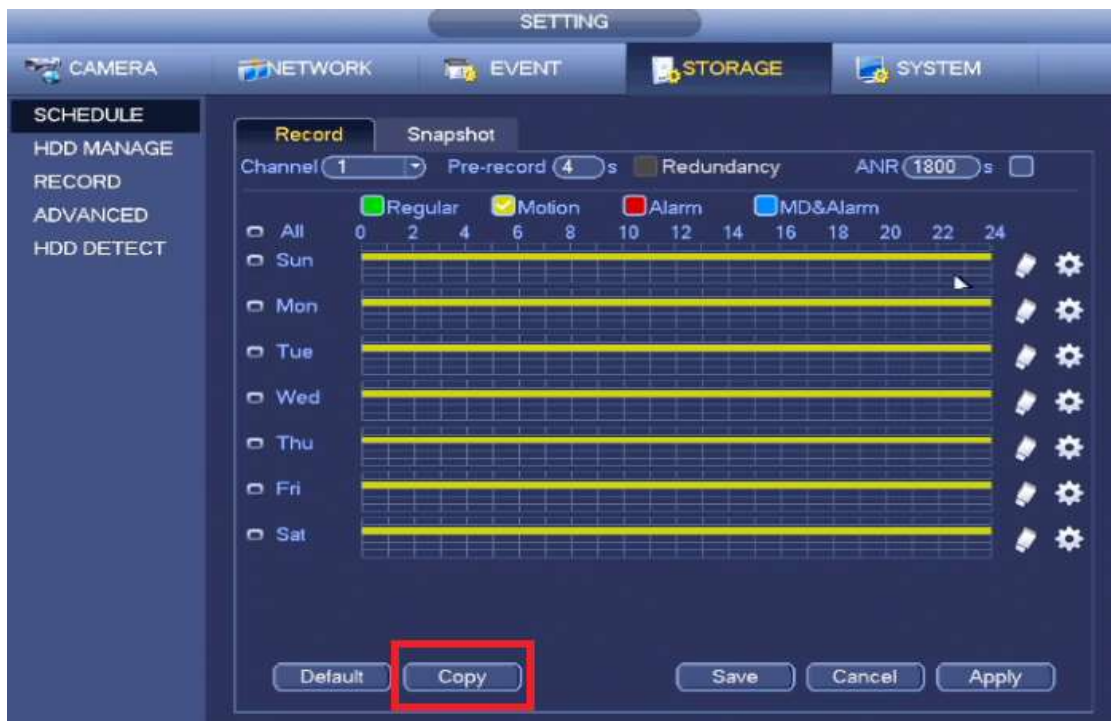
Inside of **Storage**, Click on **Schedule** on the left column. Now Click on The **Gear Icon** on the right hand side of **Sunday**



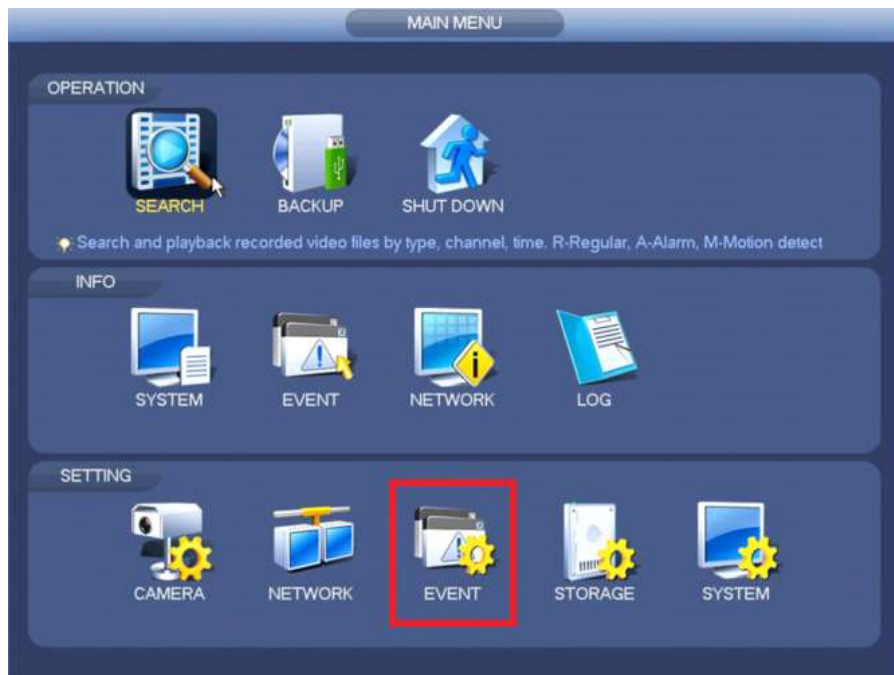
Inside of the next menu you want to remove the check box from **Regular** and place in next to **MD (Motion Detection)** under **Period 1**. Be sure to **Copy ALL** days of the week at the bottom. **Save** this Menu once it looks like this below.



Your **Schedule** Menu should look like the one below. Be sure to **Copy** to any **Channel** you would like set to Motion Detection at the bottom left of the screen. Click **Save**.



We have now successfully setup a **Motion Detection Schedule**. We now want to make sure Motion Detection is **Enabled** for each Channel. This can be done by going back to the **Main Menu → Setting → Event**



Inside of the **Event Settings** Click on **Video Detect**. Make sure to check each Channel number and Click the **Enable** Check Box. Do this one Channel at a time. **NOTE: Do not use the Copy button on this menu!** **Apply** and **Save** once all Channels have been enabled.

