

Replacing or installing a Hard Drive in your CCTV PRO Series DVR



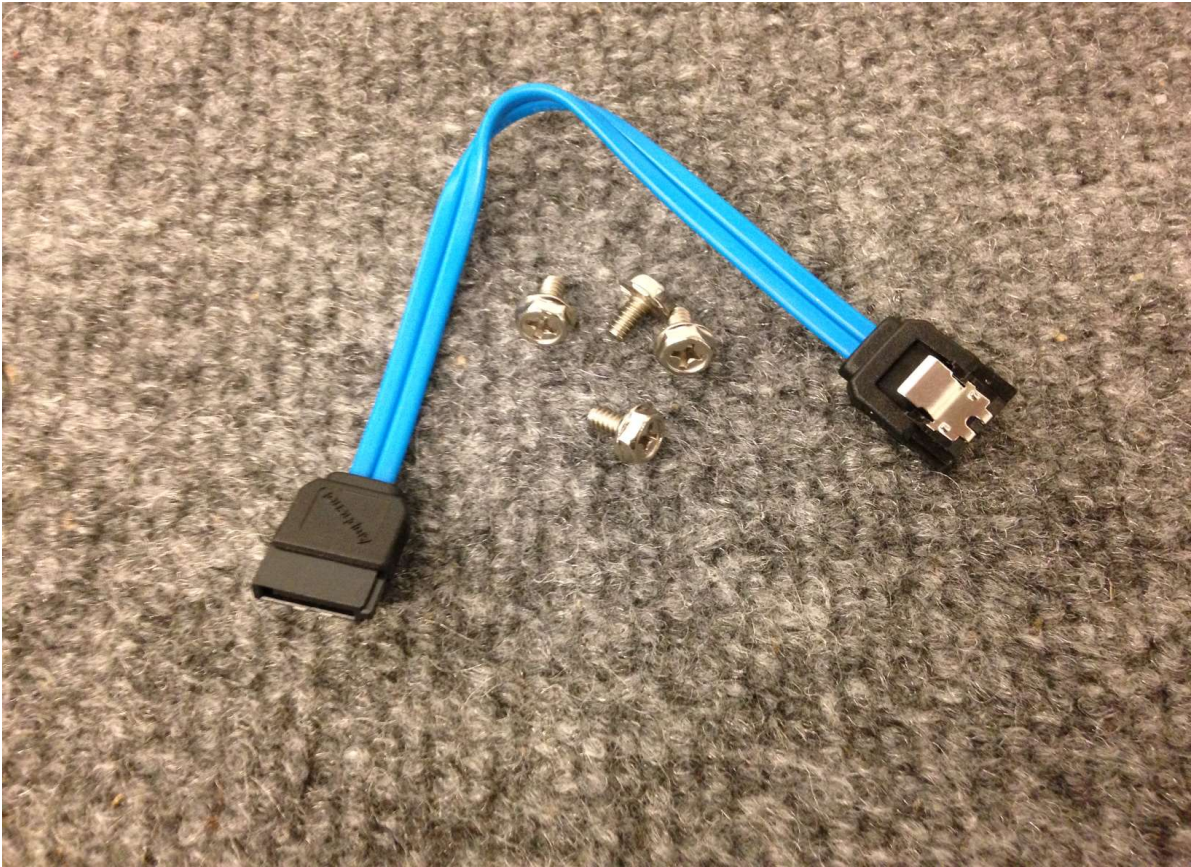
First you will need to unplug the system from its power source. *Note: Make sure the DVR is powered off before opening the DVR. Next you will need to remove all 4 screws holding the top cover in place. There will be four Phillips Head screws on the rear of the unit.



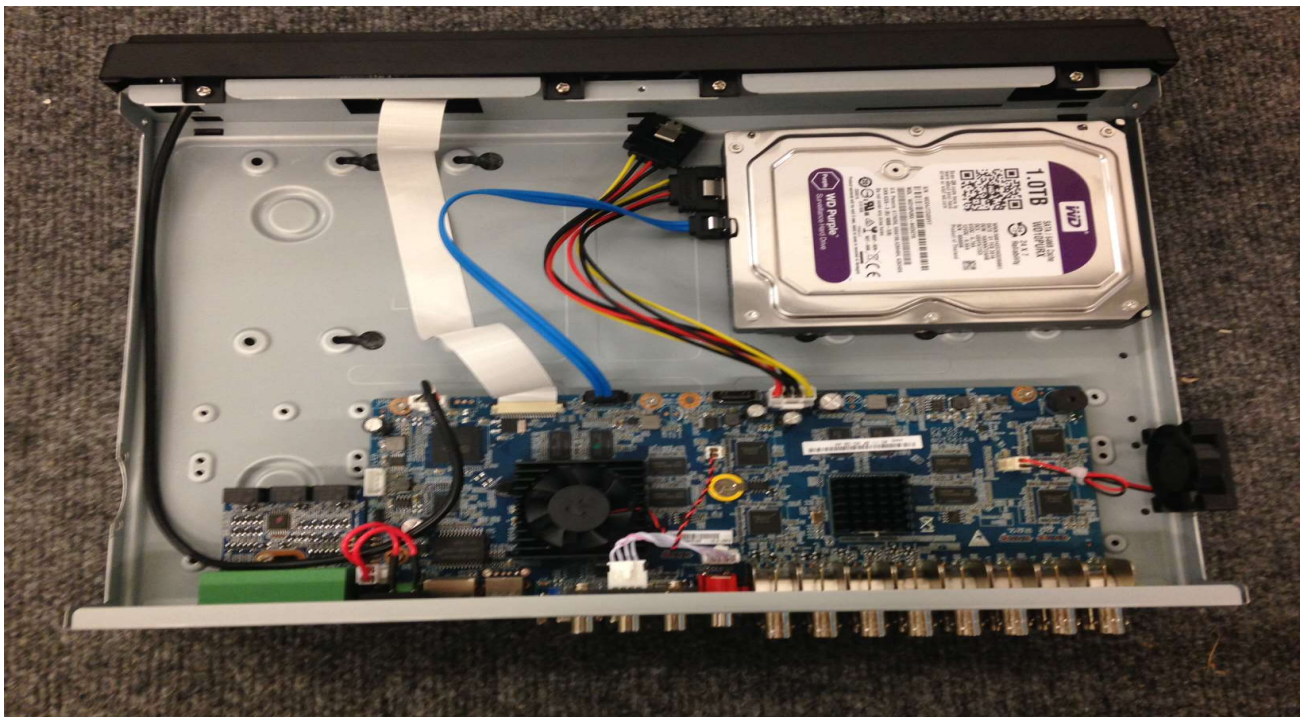
Once these screws have been removed the top cover will slide towards the rear and lift off.

Installing or Removing Hard Drive

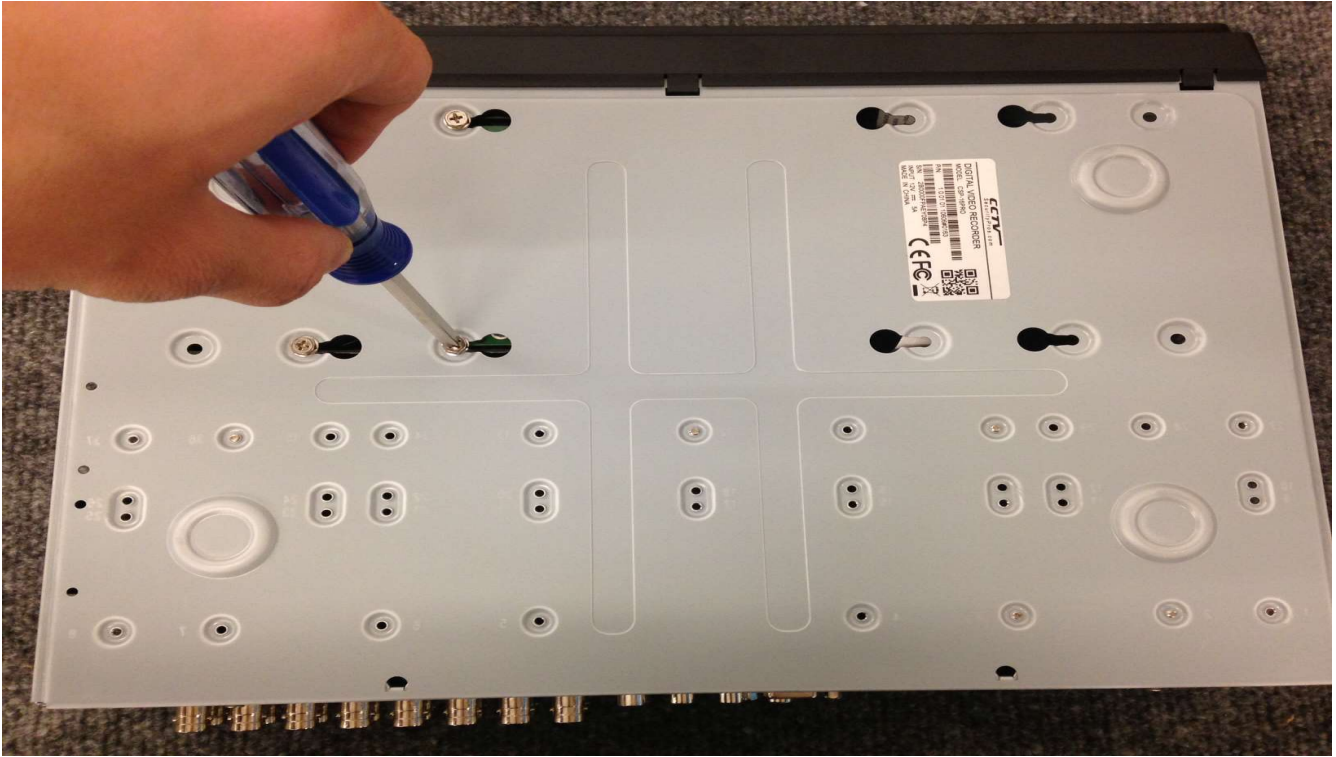
With the top cover removed you will be able to install or remove your Hard Drive. You will need a SATA cable and 4 HDD screws provided in the accessory kit of your system.



Place your Hard Drive in the DVR connecting both the Blue SATA cable as well as the SATA Power cable. This cable will be found installed already in your DVR.



You can now turn the DVR over and mount the Hard Drive to the Chassis using the supplied screws.



Once the hard drive is mounted you may assemble the top cover and fasten the four case screws removed previously in the guide.