

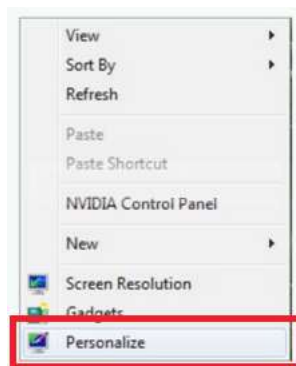
Trouble Installing SmartPSS on Windows

"Cannot Click Next on Installation"

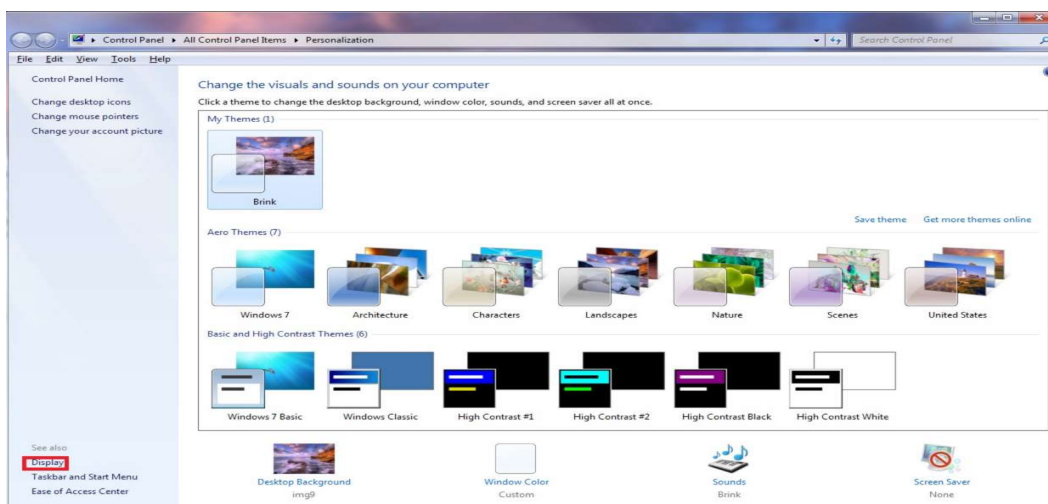
If your Display Settings are set too high your PC may not display the **"Next"** button after running the SmartPSS installation.



In order to resolve this issue you will need right click on your desktop and select **"Personalize"**



Click on **"Display"** on the bottom left of the screen.



Inside of the **Display** settings make sure your computer is set to **Smaller – 100%** and **Apply** these changes.

Once you have applied the changes you will have to either **Sign Out** of your user on your computer and **Sign In** or **Reboot** your computer.

Once you have logged back in try running the SmartPSS Installation again. The installation should be scaled properly showing you the **Next** and **Cancel** buttons seen below. Proceed with the installation.

