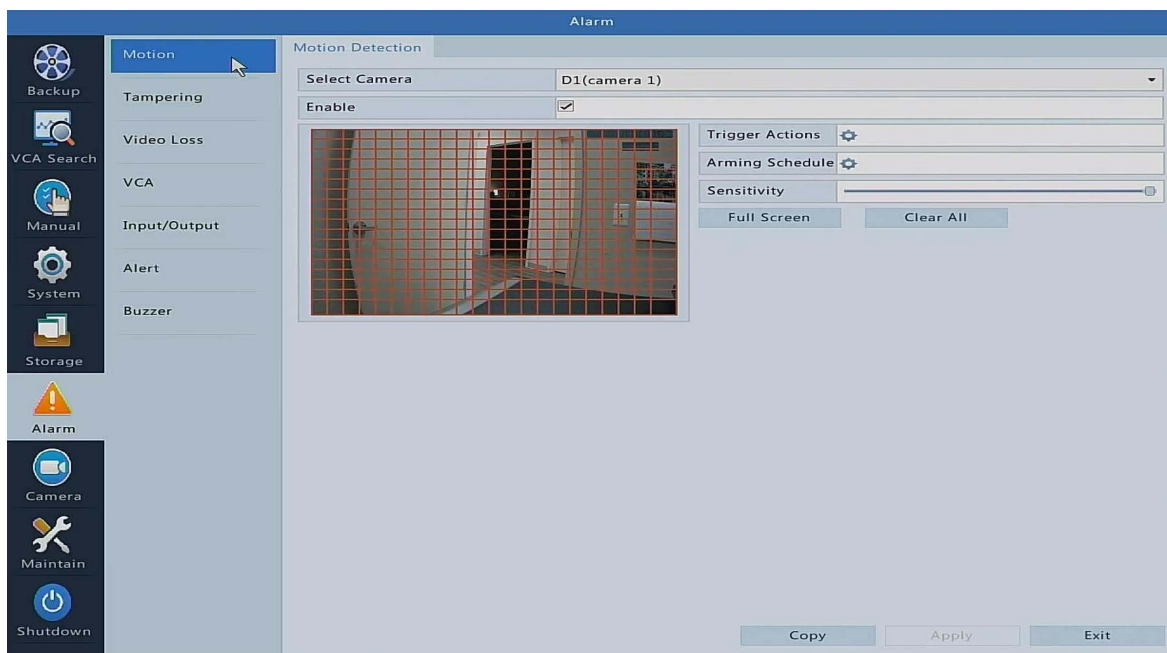


Advanced Motion Detect Settings

After configuring your NVR to record on motion detection you may want to block out regions where motion shouldn't be detected, schedule motion detection or adjust sensitivity. If you need to do any of the following please read on.

Start by right clicking on the main screen and navigating to **Menu -> Alarm -> Motion**

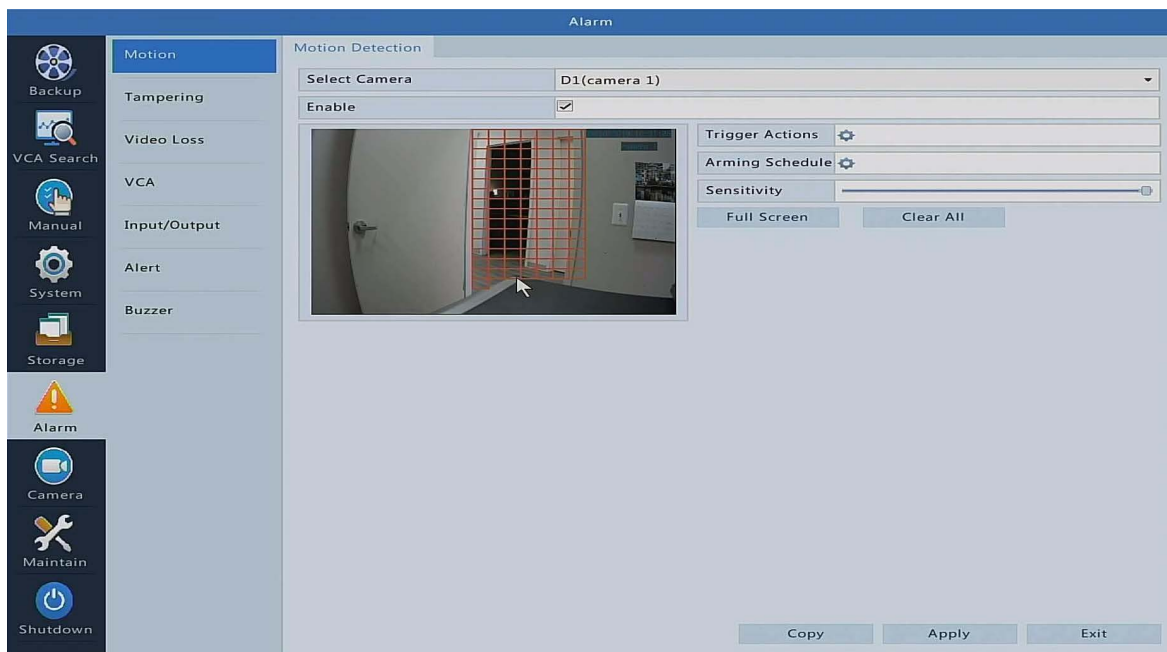
Select the **Camera** you would like to alter at the top.



You can click on the **grid** to remove the red squares. The red squares represent where motion **WILL BE** detected.

After clicking on a square it will disappear. The transparent areas **WILL NOT** detect motion.

This example shows a doorway where anyone walks through it would trigger the motion detect recording.



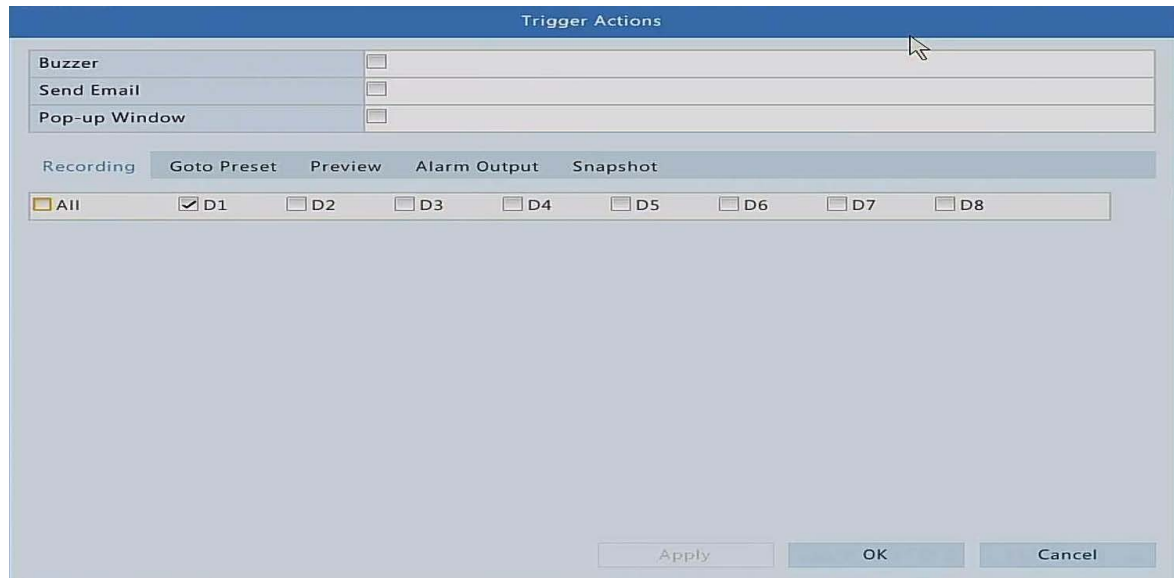
You may adjust the motion detection Sensitivity using the slider bar. The higher the number the more sensitive the motion will be. The lower the number the less recordings you will have. There are a few different options to check out in this menu as well such as Trigger Action and Arming Schedule, these are explained below.

Trigger Actions will allow you to trigger events when motion is detected.

Buzzer will emit an alarm from the NVR each time motion is detected.

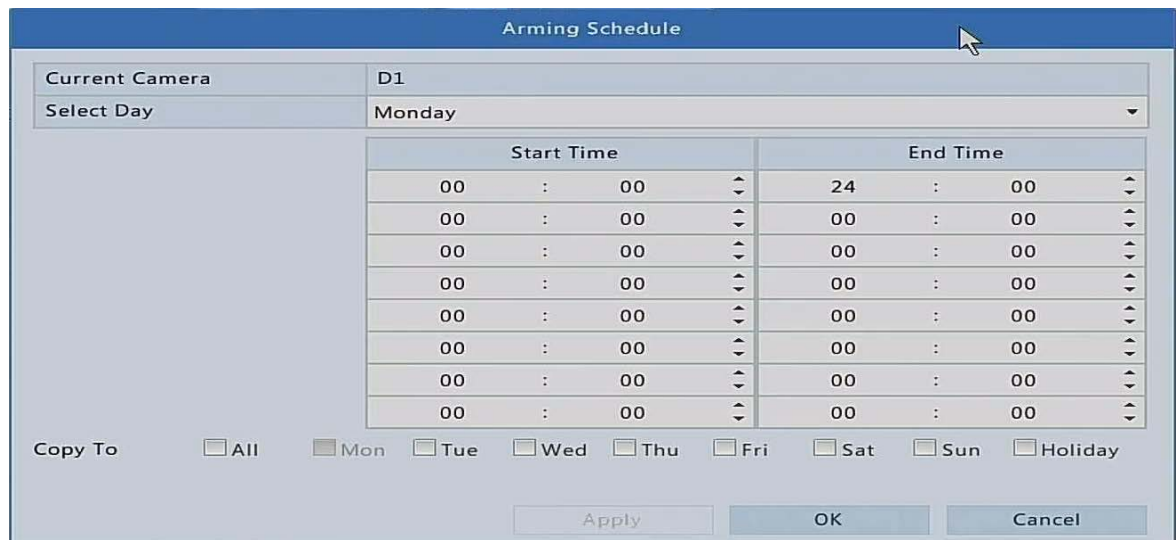
Send Email will send an email when motion is detected. ****Note** - Your email alert settings will have to be configured for this to function.

Pop Up Window will show a message on screen to show you motion was detected on that particular camera



We recommend keeping the **Recording settings** at the bottom set to default. Altering this may record the incorrect camera when motion is detected.

You may **schedule** these events if you choose to. They are set to 24/7 by default but feel free to alter for your application.



Remember to apply any changes you make by clicking the Apply button at the bottom of each menu!